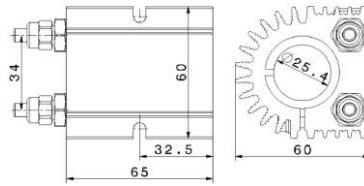


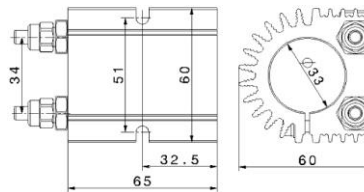
4825/25,4



Motorspindel	4015
Spanndurchmesser	Ø 25,4 mm / 1"
Anschluss	Ø 6 mm

	Bestell-Nr. Part No.	1001 4841
Motor spindle	4015	
Clamping diameter	Ø 25,4 mm / 1"	
Hose connection	Ø 6 mm	

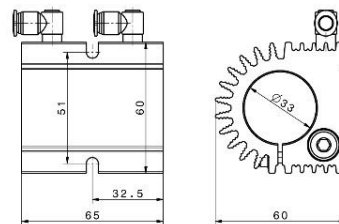
4825/33



Motorspindel	4025, 4026, 4033
Spanndurchmesser	Ø 33 mm
Anschluss	Ø 6 mm

	Bestell-Nr. Part No.	1001 6971
Motor spindle	4025, 4026, 4033	
Clamping diameter	Ø 33 mm	
Hose connection	Ø 6 mm	

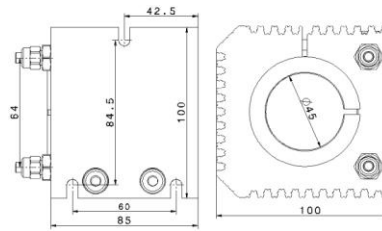
4825/33 ASE



Motorspindel	4025, 4026, 4033
Spanndurchmesser	Ø 33 mm
Anschluss	Ø 6 mm

	Bestell-Nr. Part No.	2001 3393
Motor spindle	4025, 4026, 4033	
Clamping diameter	Ø 33 mm	
Hose connection	Ø 6 mm	

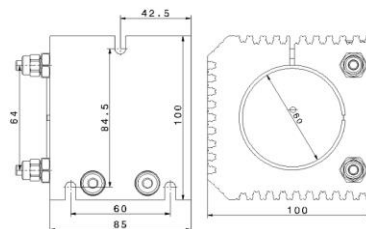
4846



Motorspindel	4040, 4041, 5045
Spanndurchmesser	Ø 45 mm
Anschluss	Ø 6 mm

Bestell-Nr. Part No. 1002 7868	
Motor spindle	4040, 4041, 5045
Clamping diameter	Ø 45 mm
Hose connection	Ø 6 mm

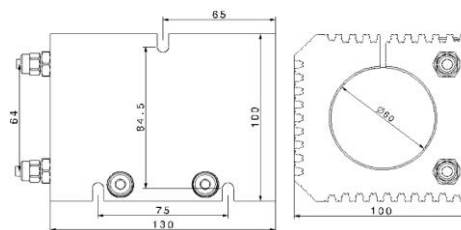
4861



Motorspindel	4060, 4061, 5060
Spanndurchmesser	Ø 60 mm
Anschluss	Ø 6 mm

Bestell-Nr. Part No. 1002 7365	
Motor spindle	4060, 4061, 5060
Clamping diameter	Ø 60 mm
Hose connection	Ø 6 mm

4864



Motorspindel	4064
Spanndurchmesser	Ø 60 mm
Anschluss	Ø 6 mm

Bestell-Nr. Part No. 1002 7351	
Motor spindle	4064
Clamping diameter	Ø 60 mm
Hose connection	Ø 6 mm

Änderungen vorbehalten

Subject to change without notice